



Installation Instructions

1.

Measure and mark a vertical line on the rear wall for the partition positions then mark the wall for three brackets.

2.

Fix three brackets for each partition on the vertical line marked on the wall.

Make sure that the partition is level and fix to the brackets on the wall.

3.

Mark the positions of the three brackets on the fascia/pilaster and fix to the end of the partitions.

4.

Fix the support leg to the position and adjust to the correct height. Make sure that the partition is aligned correctly and fix the leg to the floor.

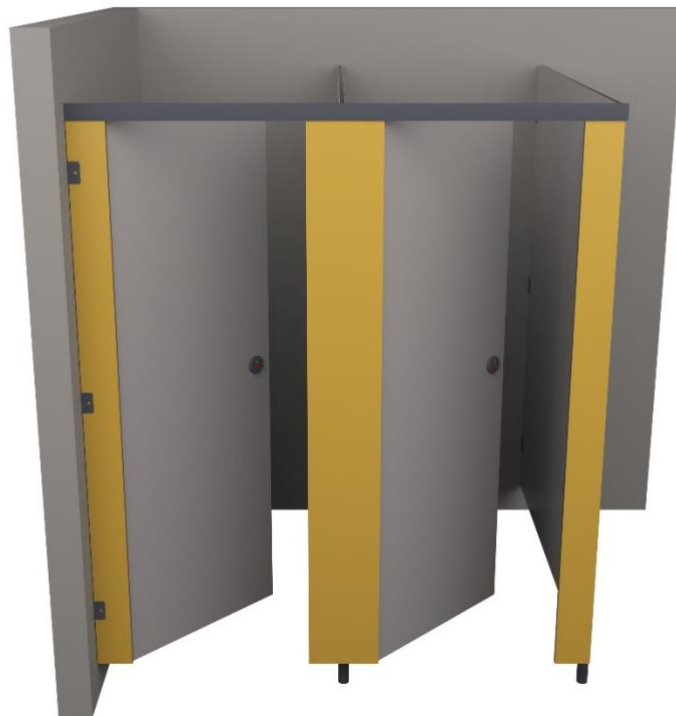
5.

Once the partitions and pilasters are permanently secured the headrail must be placed into position over the tops of the pilasters to bridge the door opening gap and fixed by securing to the pilasters.

6.

Attach the hinges to the fascia and door ensuring that the door is hung horizontally. Attach the indicator bolt to the door and engage the lock, mark off on the fascia the point to attach the keep. Unlock the bolt and fix the keep to the fascia

When setting out front pilasters make sure you have 605mm clearance for 650mm door.



TECHNICAL DIMENTIONS	
DOOR SIZE	650MM X 1850M
DOOR CLEARANCE	605MM (BETWEEN PILASTERS)
PILASTERS HEIGHT	1850MM
DIVISION DEPTH	1480MM
FLOOR CLEARANCE	150MM (ADJUSTABLE)
CUBCIEL HEIGHT O/A	2000MM